

WATCH PROGRAM STATISTICS

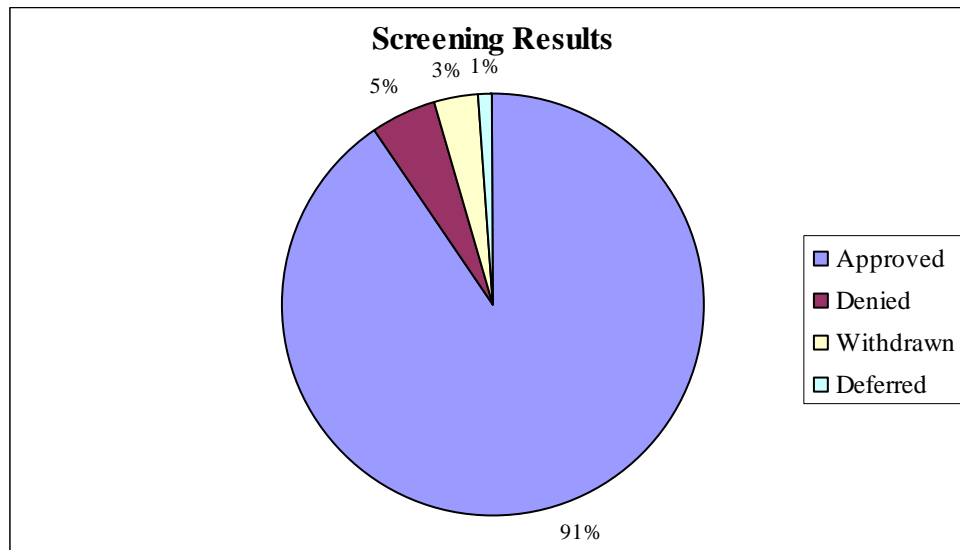
The following is a compilation of statistics for the WATCH West Program – it does not include information for the WATCH East Program which is located in Glendive, Montana and opened in February 2005. These numbers were generated from information gathered from all Family Members who have entered into the program since February 1, 2002 through June 30, 2008.

AVERAGES

- Age at admission: **42.88**
- BAC at time of arrest: **.207**
- Number of DUIs: **5.64**
- Number of misdemeanors: **18.79**
- Number of felonies(includes current charge(s)): **2.59**
- Number of prior outpatient treatments: **.87**
- Number of prior inpatient treatments: **1.28**
- Age of first use: **13.77**
- Level of education: **11.87**
- Number of dependents: **1.43**
- Length of stay for treatment complete: **183 days**
- Average LSI Score upon admission: **24.78**
- Average LSI Score upon discharge: **21.23**
- Individuals with Psychiatric conditions: **23.49%**
- Primary Drug of Choice: **Alcohol**
- Secondary Drug of Choice: **Marijuana**
- Tertiary Drug of Choice: **Methamphetamine**

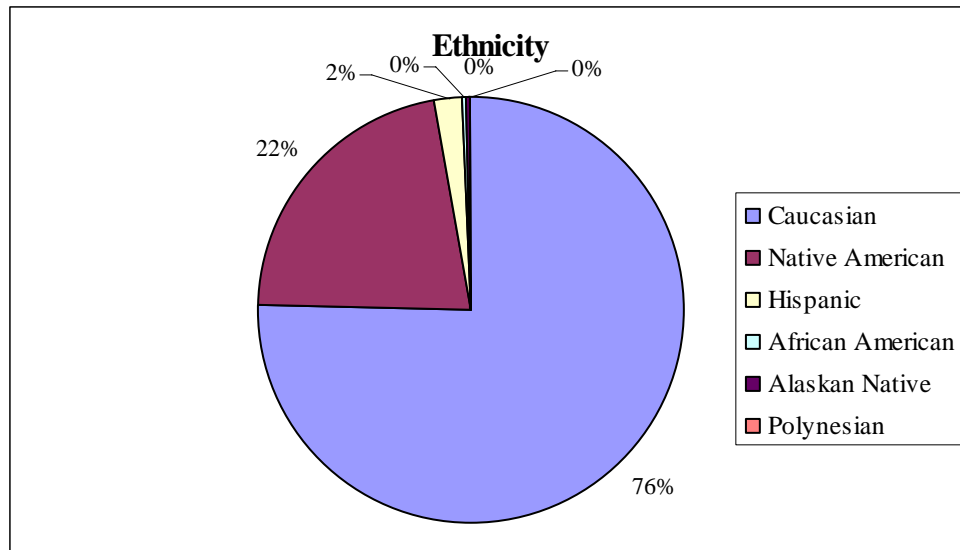
SCREENING and WAITING LIST

- Waiting List: **50**
- Total number screened: **1,982**
Males screened: **1,853**(93.39%) Females screened: **129** (6.61%)



- Total Approved: **1,795** (91.11% of total screened)
Number withdrawn: **63** (3.18% of total screened)
Number deferred: **19** (.96% of total screened)
Number denied: **94** (4.75% of total screened)
 - Due to criminal history: 60
 - Due to inappropriate sentence: 9
 - Medically inappropriate: 10
 - Denied by DOC: 13
 - Denied by Parole Board: 2

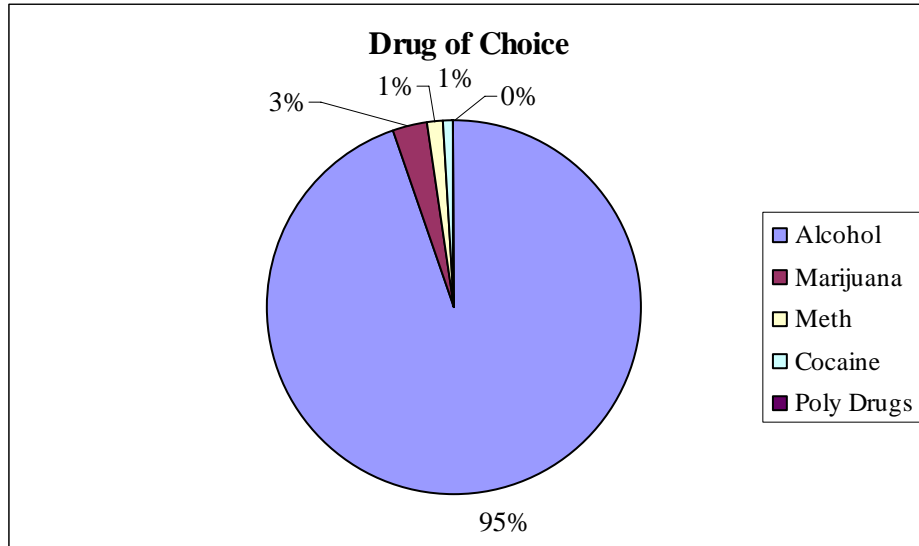
TOTAL # OF ADMISSIONS TO THE PROGRAM: 1,635



Of these 1,635 there have been:

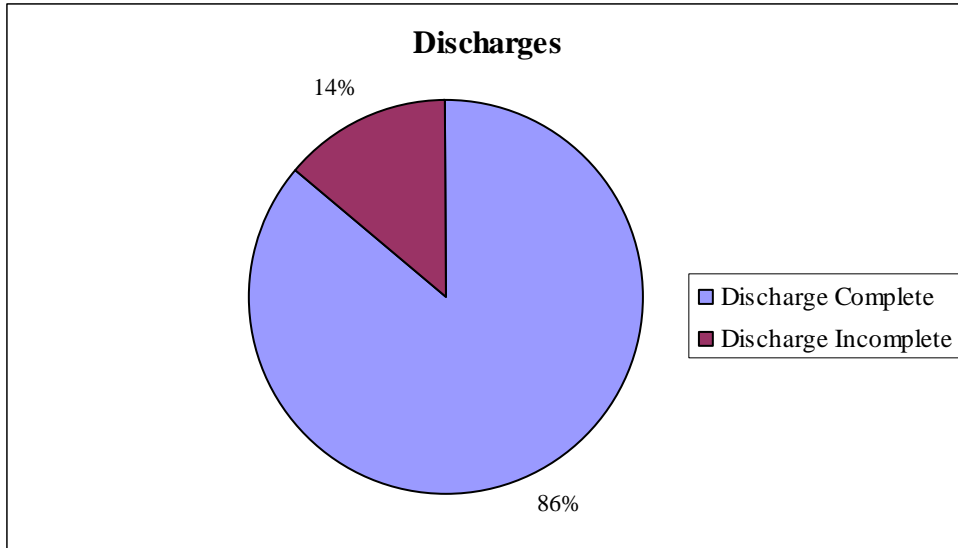
- 1,513 Males (92.60%)
- 122 Females (7.40%)
- 1,231 Caucasian (75.30%)
- 355 Native Americans (21.83%)
- 38 Hispanic (2.27%)
- 8 African American (.42%)
- 2 Alaskan Native (.12%)
- 1 Polynesian (.06%)

DRUG OF CHOICE



- 1,454 Alcohol
- 40 Marijuana
- 16 Meth
- 11 Cocaine
- 1 Poly Drugs
- 93 No Report (5.69%)

DISCHARGE INFORMATION

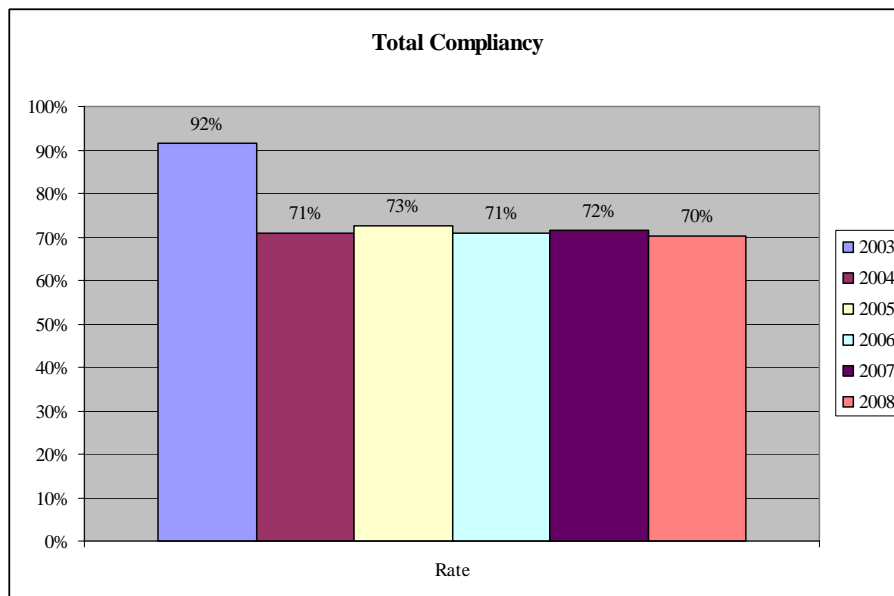


TOTAL NUMBER OF DISCHARGES: 1,522

Of these 1,522 discharges:

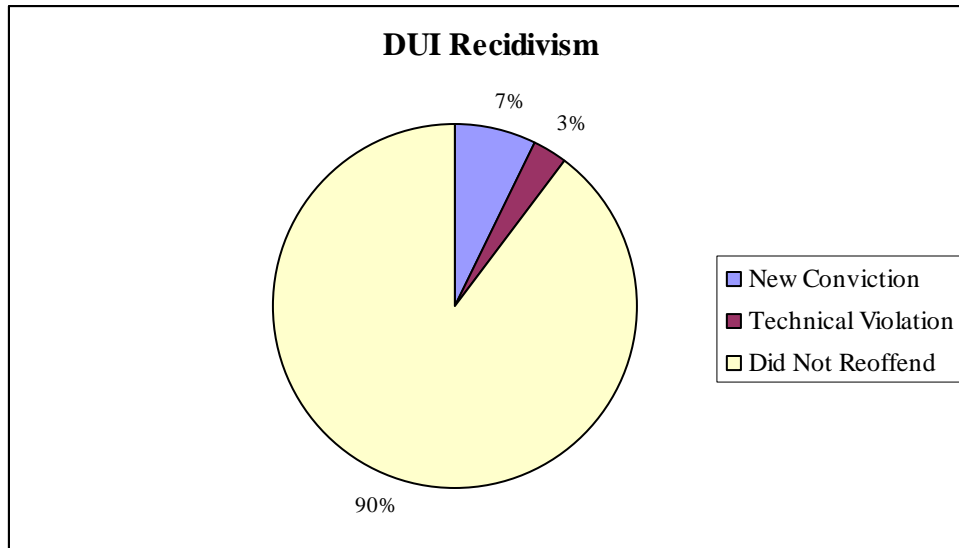
- 1,311, or 86.13%, of total discharged were treatment complete.
- **211**, or 13.87%, of total discharged were for the following reasons:
 - 44** were transferred to the WATCH East Facility.
 - 70** voluntarily resigned.
 - 89** discipline/sanctions/sentencing/other
 - 6** medical reasons
 - 2** due to death

Overall Program Compliancy



Compliancy rates are based on bi-yearly reports from Probation and Parole. Compliancy means that there have been no sanctions, violations or interventions.

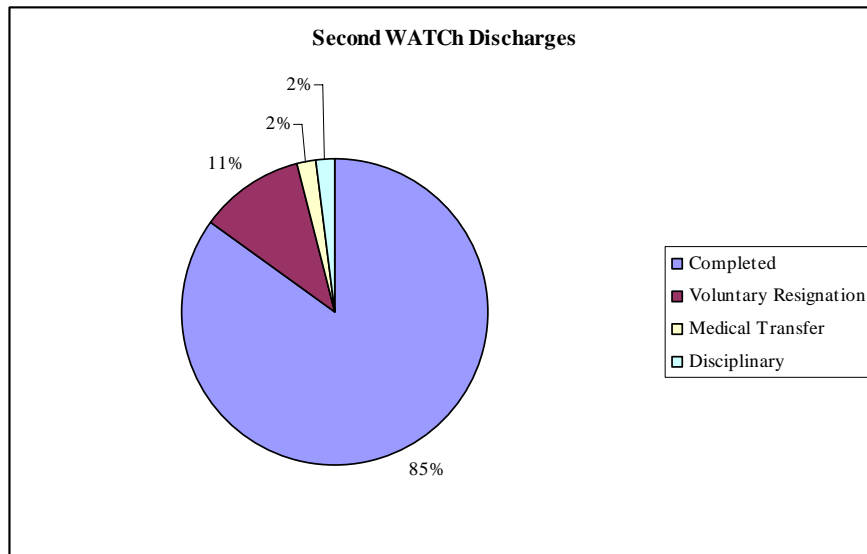
DUI RECIDIVISM



124 out of 1,522 graduates were arrested for another DUI
1,398 have not reoffended
88 received a new conviction or are awaiting sentencing
36 received a technical violation rather than another DUI

Highlights of year July 1, 2007 – June 30, 2008

- **Phase Specific Groups** – The afternoon groups remain phase specific. During the period of July 1, 2007 to present these groups continue to be beneficial to the program. .
- **Quality Assurance Committee** – Staff members of the WATCH Program continue to identify problems and work on solutions which benefit the WATCH Program. During the current fiscal year, the following Quality Assurance issues have been addressed: Treatment packets, redesign of clinical guidelines, chart audits, e files, redesign of treatment summary, replacement of step work with Hazelton material, tracking of clinical hours and schedule changes to reflect the changing needs of the population. One project not yet completed is updating the information book which is given to visitors, courts, lawyers, or another person wanting to know about the WATCH Program.
- **T.C. Committees** – The existing committees all have staff advisors who guide the WATCH family members in maintaining proper representation by all WATCH family units, attendance and enthusiasm for each committee. The program adds and subtracts committees based on the needs of the T.C.
- **Synchronized Schedule** – The synchronized schedule has become a key component of delivering of standardized treatment services. Each family member will, during the course of treatment, attends a specific group at the same time, this continues to work well within the WATCH Program (C.T.E. is the same time for Phase 1, Phase 2 and Phase 3). Each client receives a very consistent and predictable approach to any given group.
- **Graduation Format** –The graduation ceremony which is held once a month(third Wednesday of the month), continues to be a positive highlight for the client as well as for the program. The graduations are dignified and semi formal in nature.
- **Orientation Group** – This group continues to address the needs of the new client. It is mandatory and meets each day for a minimum of two hours each day. The members are well indoctrinated to the WATCH Program and client expectations. The clients are very supportive of his group and report less anxiety/fear concerning treatment.
- **Life in Recovery** – This is a new group which is three weeks in length. Anyone who is in Phase 3 and has 3 weeks left in the program are required to attend this group so as to review treatment experience and to identify pro-social behavior which will be expected of them when they are released to probation.
- **Education Information** – One family member earned his GED, 12 are currently studying for the tests. 6 family members have enrolled in college. 189 Jesness Exams have been administered along with 204 TABE Tests. Seven WATCH Newsletters have been published. Four flagging classes have been offered with over 50 graduates.
- **2nd WATCH Program** – Since the inception of this program in 2006 there have been 89 total admissions to the program with an overall completion rate of 86%. To date, the overall compliancy rate of individuals completeing the 2nd WATCH Program is currently at 80.7%. There have been a total of 3 new DUI's (4.8%) with 9 individuals procuring other revocations (14.5%).



- **Aftercare Update**

- **Transitional Housing**

- **Missoula Area** – Next Step Housing continues to be supportive of the WATCH graduates leaving our program. Since the inception of the program in July 2006, Next Step has accepted over 17 WATCH graduates into its housing program, in addition to facilitating job searches and schooling opportunities. The Missoula Probation and Parole has recognized and supported Matthew Hopkins, the manager of this program to the full extent.
 - **Bozeman Area** – The Conn Connection operated by Casey Rudd has been accepting WATCH graduates with the blessings of the Bozeman Probation and Parole. So far, 5 WATCH graduates have transitioned through its program. The staff of ConnConnection will always call if an opening comes up. To quote Casey, “WATCH clients are by far the most stable”. Way to go Casey.

- **CD Counseling/Aftercare Groups**

- **Next Step Counseling** in Missoula now has endorsement of the Probation and Parole and the majority of WATCH graduates locating to Missoula are referred there. P & P is currently working with the DOC to start an Intensive Outpatient Program at Next Step Counseling.
 - **Courage to Change** – Missoula continues to accept WATCH graduates for Aftercare CD counseling.
 - **Rocky Mountain Counseling** in Helena continues to grow. Presently Craig Struble has 20 WATCH graduates from both programs in his Aftercare CD counseling groups.

- **WATCH Support Groups**

- **More than 23 recovery based support groups around the state have been started by WATCH graduates thus far.**
 - **Opportunity AA Group** that started in 2007 now averages up to 40 individuals from the Anaconda/Butte area for their Tuesday night feast and meet. WATCH Family Members are allowed to attend this outside meeting while in the Program.

WATCH INSTITUTES NEGLIGENT VEHICULAR HOMICIDE GROUP – THE KNIGHTS

In mid-December 2007 – a group of 5 WATCH Family Members (who had taken a life while driving under the influence) met to discuss their common thoughts and opinions. They discovered that they had many issues that were not always openly discussed in any previous setting including treatment programs. This group was encouraged to organize – meet on a regular basis – design their role as the negligent homicide group and give themselves a name. Two Licensed Addiction Counselors, Merle Yellow Kidney and Donna Benson, volunteered to work with this group. They have acted as ‘guides’ to the organization and facilitators to their specific therapeutic needs.

The group understood the need to talk about what they had experienced and to begin to grasp the dynamics and the effect this processing had on one another. They identified that they all shared in a shame aspect which was directly and indirectly reinforced by themselves and others in the community. This group identified that they all shared a ‘grief’ aspect which none had addressed prior to WATCH. Each had become accustomed to the way they seemed to be treated by their communities which resulted more often in their choice to become hardened and resistant. These men usually abandon others before they can be abandoned and they have many unresolved issues and the feelings that go along with those issues.

The name “The KNIGHTS” is significant in that the group members come to WATCH with a ‘protective’ armor which they have learned keeps feelings in check and allows them to be ever ready for an attack which can come from any direction. They never had to reveal their real identities since they maintained the mask and the strength projected by the full armor – but inside they have the feeling, purpose, humility and even the integrity as other men do. The Knights drafted guidelines for each specific phase and discussed various ways they could continue to process.

The Knights understand that their role is that of ‘messenger’ to others in the WATCH Community. The Knights are men who are unafraid to face the future as well as present because they are learning to be half monk and half special forces as they will pay it forward through public speaking and helping others as they themselves progress. This is a role of service to others and carrying an ‘empty bowl’ without expectations of reward or special recognition.

The Department of Corrections has endorsed the WATCH Program to accept up to five defendants who have been charged with Negligent Vehicular Homicide. The Knights also include those who have been sentenced for a felony DUI who also may have taken a life while under the influence in a previous charge. The work of this group will be considered flux and ever changing since this type of work has never been done before and we will learn as we go and document the process for future admissions. We look forward to the future and what it might hold for the Knights and the evolving professional role counselors will play in this process.

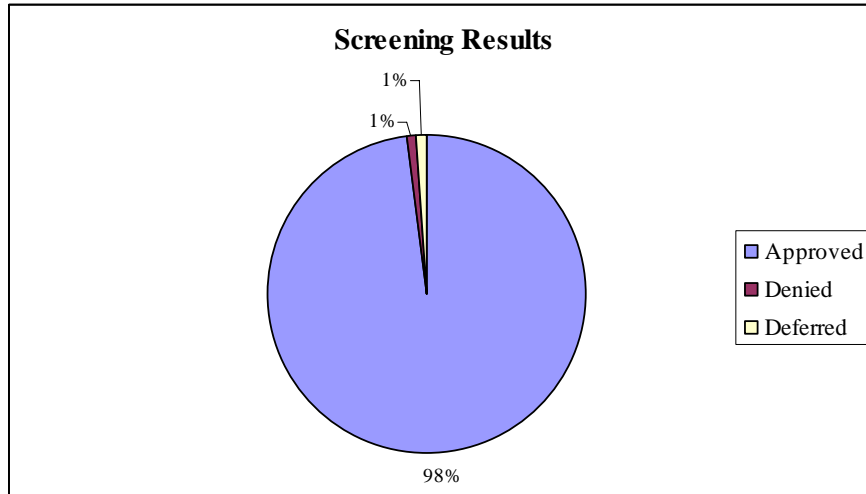
- **Wells Toastmasters Group** - WATCh started a Toastmasters Group in early 2007 to give family members the confidence to speak in public, with their PO, on the job for any reason. This is self-directed with up to 15 members and mimics the Toastmasters International Group. Meetings are conducted on a bi-weekly basis and the group maintains a fun attitude. Games and speech debates are part of the excitement. TC celebrates Toastmasters by having Toastmasters Tuesday every week. Two members of Toastmasters give a short speech to the TC at that time. The group's goal is to incorporate the Speech Crafters and start inviting the Toastmasters community for further training and resources.
- **Centurions** – This group is composed of clients aged 60 and older. The focus is to help those in the group with age specific issues such as: loneliness, loss and a sense of purpose within the community. Members of the group will have specific clinical guidelines to address within each of the three phases (I, II, II) while they are at the WATCh program. Some of these will be: grief group, a weekly meeting for members, education (pamphlets, community information, etc.), and speaking to outside communities (hospitals and jails). These clinical guidelines were created from discussions and meetings with a committee of three individuals who were assembled to help decide what the group needs were, how they could resolve these needs, and what name would best represent this group of men. They will have the opportunity to gain a sense of camaraderie with those in their age group as well as a sense of purpose, unity, and accomplishment within the therapeutic community and outside communities.
- **Community Speakers Bureau** – WATCh Family Members have had the opportunity to speak at seven schools this year. In that time, we have reached at least 1500 students plus school staff. We started this year out in Dillon and then went to Sheridan, Twin Bridges, Lima, back to Dillon, Philipsburg and Drummond. Included on these speaking engagements are the “Knights”. These are family members who have taken another person's life by drinking and driving. This brings reality to the kids as the Knights are people who never thought they would hurt another person. The Staff that accompanies those who speak also bring information such as statistics, laws, and consequences. They also do motivational speaking letting the kids know that alcohol and other drugs will interfere with their hopes and dreams. They let them know that they have a choice, also to be responsible and make good decisions. This is an amazing process for both the schools and the WATCh Family Members. The list of those asking to go speak is always full. This is a wonderful opportunity for WATCh family members to “pay it forward”.

Administrator's Comments – A naval officer once remarked: “To be a good leader – what is essential is to be respected, trusted and effective.” I spent nine years as a naval officer and these words have always been part of my ethos. I have been honored to “Captain” the WATCh Program these past two years and CCP West this past year and a half. This has been an exciting and challenging adventure. There is no greater reward than guiding others to change and even save their lives. We do this one client at a time – hour after hour – day after day! In our corporation there are no “home run hitters” – we are a team with one mission – WATCh and CCP West are just one part of that great team. True leaders never accomplish what they want by simply ordering it done – real leadership must be done by example – not precept. That is how WATCh/CCP West works best – all of our staff are leaders – they are all silent heroes. The rest of 2008 and the anticipation of 2009 will be a promise of an “explosion” of excellence, professionalism and unquestionable dedication.

Alex Vukovich
Administrator

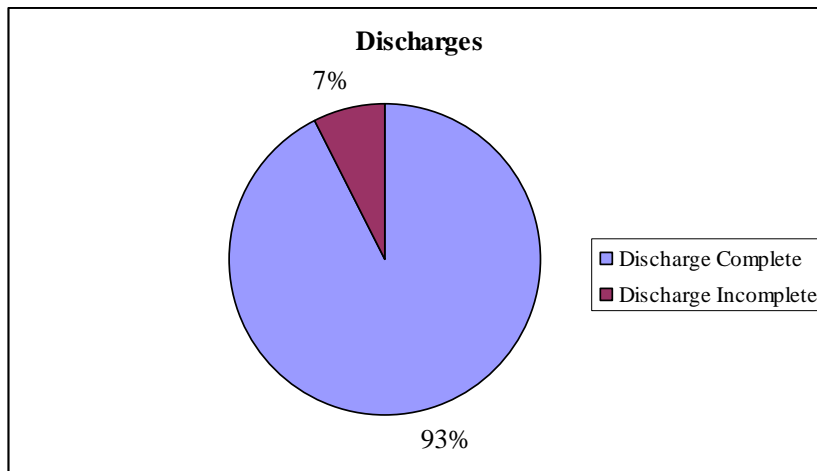
SCREENING

- Total number screened: **291**



- Total Approved: **282**
Number withdrawn: **0**
Number deferred: **0**
Number denied: **9**
- Average Daily Population: **106.58**

DISCHARGE INFORMATION



TOTAL NUMBER OF DISCHARGES: 200

Of these 200 discharges:

- **187** of total discharged were treatment complete.
- **17** of total discharged were for the following reasons:
 - 12** Voluntarily resigned.
 - 2** Discipline/Sanctions/Sentencing/Other
 - 1** Medical reasons
 - 1** Sentence issue
 - 1** Death

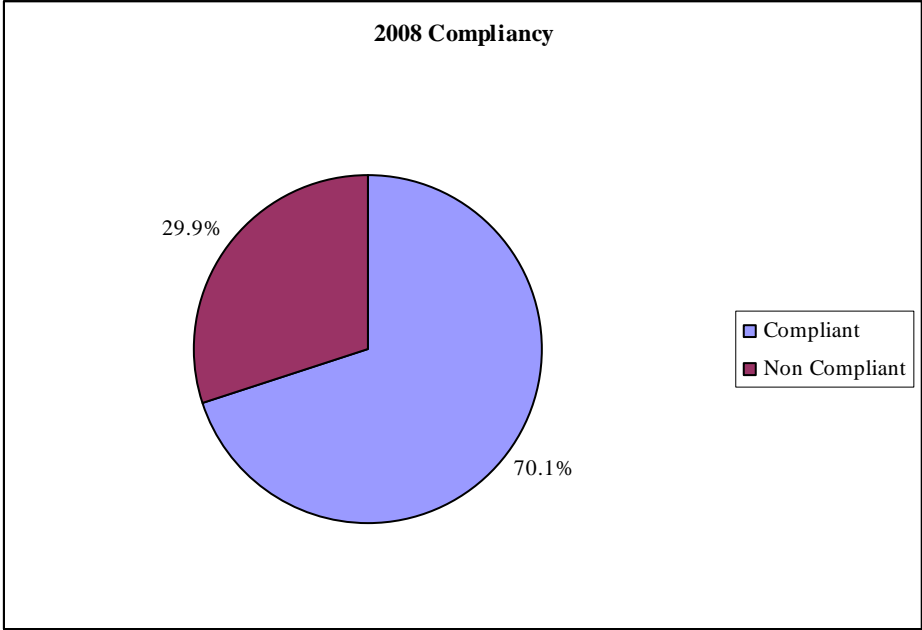
SECURITY INFORMATION

For year July 2007 to June 2008:

- Number of Escapes: **0**
- Number of Positive UAs: **0**
- Number of Positive BAs: **0**
- Number of Class I write-ups: **1** (formal)
- Number of Class II write-ups: **56** (14 were formal)
- Number of Class III write-ups: **84**

(NOTE: positive UAs and BAs does not include intake UAs or BAs)

**TOTAL PROBATION AND PAROLE/ AFTERCARE
COMPLIANCY RATE FOR 2007-2008
70.1%**



SENTENCING COUNTY INFORMATION:

COUNTY	TOTAL # OF ADMISSIONS FROM THIS COUNTY	COUNTY	TOTAL # OF ADMISSIONS FROM THIS COUNTY
Beaverhead	16	McCone	0
Big Horn	22	Meagher	2
Blaine	5	Mineral	15
Broadwater	10	Missoula	169
Carbon	7	Musselshell	2
Carter	0	Park	25
Cascade	125	Petroleum	0
Choteau	3	Phillips	0
Custer	4	Pondera	12
Daniels	0	Powder River	1
Dawson	18	Powell	26
Deer Lodge	23	Prairie	0
Fallon	0	Ravalli	66
Fergus	14	Richland	7
Flathead	120	Roosevelt	1
Gallatin	140	Rosebud	24
Garfield	2	Sanders	10
Glacier	22	Sheridan	4
Golden Valley	1	Silver Bow	98
Granite	13	Stillwater	5
Hill	62	Sweetgrass	2
Jefferson	14	Teton	7
Judith Basin	2	Toole	5
Lake	79	Treasure	3
Lewis & Clark	151	Valley	3
Liberty	0	Wheatland	0
Lincoln	40	Wibaux	0
Madison	4	Yellowstone	251